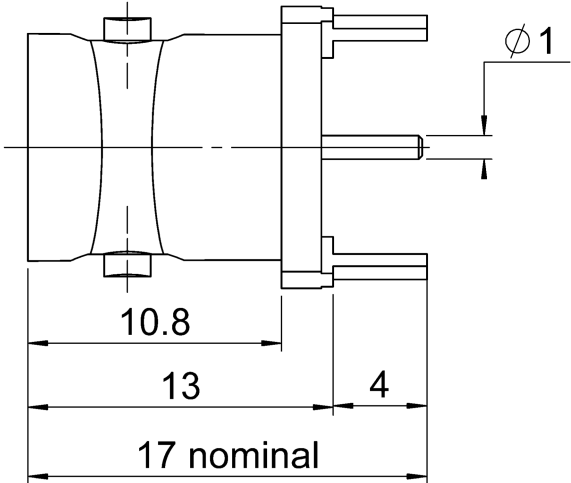
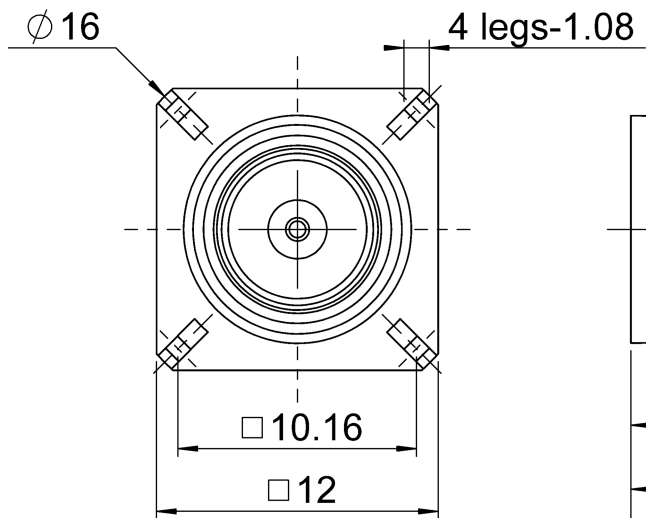
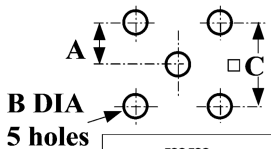


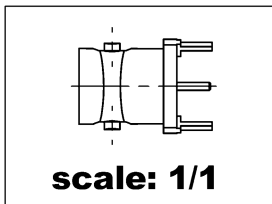
PAGE 1/2	ISSUE 1450C	SERIES BNC 75-COM	PART NUMBER R142426261
----------	-------------	-------------------	------------------------



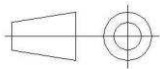
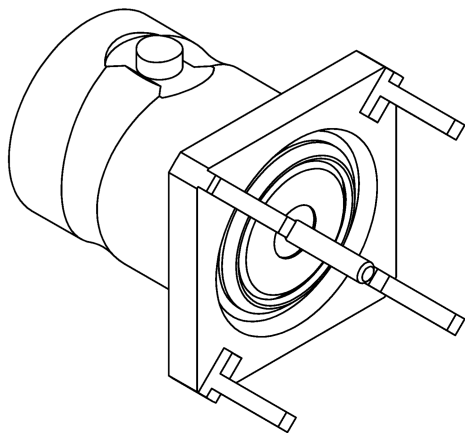
PANEL CUT OUT



	mm	
	Maxi	mini
A	5.13	5.03
B	1.4	1.2
C	10.21	10.11



All dimensions are in mm.



COMPONENTS	MATERIALS	PLATING (μm)
Body	BRASS	BBR
Center contact	BRASS	GOLD OVER NICKEL
Outer contact	-	-
Insulator	PTFE	-
Gasket	-	-
Others parts	-	-
-	-	-
-	-	-

PAGE 2/2

ISSUE **1450C**

SERIES **BNC 75-COM**

PART NUMBER **R142426261**

PACKAGING

Standard	Unit	Other
100	Contact us	Contact us

ELECTRICAL CHARACTERISTICS

Impedance		75	Ω
Frequency		0-1.5	GHz
VSWR	1.5	+	0.0000 x F(GHz) Maxi
Insertion loss		NA	\sqrt{F} (GHz) dB Maxi
RF leakage	- (NA	- F(GHz)) dB Maxi
Voltage rating		500	Veff Maxi
Dielectric withstanding voltage		1500	Veff mini
Insulation resistance		5000	M Ω mini

ENVIRONMENTAL

Operating temperature	-35/+70	$^{\circ}\text{C}$
Hermetic seal	NA	Atm.cm3/s
Panel leakage	NA	

MECHANICAL CHARACTERISTICS

Center contact retention		
Axial force – Mating End	15	N mini
Axial force – Opposite end	15	N mini
Torque	NA	N.cm mini

SPECIFICATION

OTHER CHARACTERISTICS

Recommended torque		
Mating	NA	N.cm
Panel nut	NA	N.cm
Mating life	100	Cycles mini
Weight	4.0900	g

Assembly instruction:

Others:

-